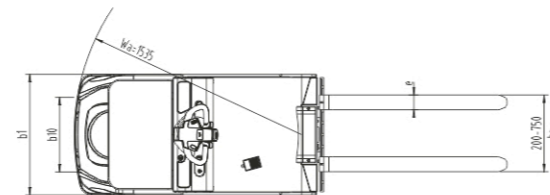
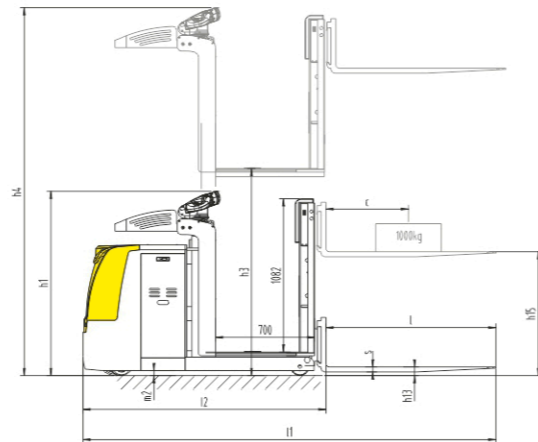
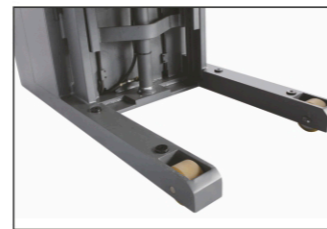
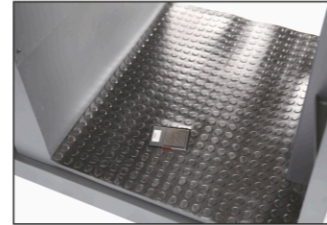


Technical parameters

1KG=2.205LB 1INCH=25.40MM

Model	OPL10S	
Load capacity	Q(kg)	1000
Load centre distance	c(mm)	600
Wheel base	Y(mm)	1300
Service weight(with battery)	kg	
Wheels (rubber, high elasticity, pneumatic tyre, polyurethane wheel)		PU
Tyre size, front	mm	φ250×70
Tyre size, rear	mm	φ128×73
Additional wheel(dimension)	mm	φ150×60
Wheels, number front rear(x=driven wheels)		1x+1/4
Tread, front	b10(mm)	502
Tread, rear	b11(mm)	700
Height, lowered	h1(mm)	1300
Height, platform	h3(mm)	1200
Height,mast extended	h4(mm)	2360
Height, fork lifted	h15(mm)	800
Height, fork lowered	h13(mm)	70
Overall length	l1(mm)	2920
Length to face of forks	l2(mm)	1720
Overall width	b1(mm)	812
Fork dimensions	s/e/l(mm)	35×100×1200
Fork width	b5(mm)	200-750
Wheelbase ground distance	m2(mm)	35
Aisle width, with pallet 1000x1200 crosswise	Ast(mm)	3157
Aisle width, with pallet 800x1200 lengthwise	Ast(mm)	3178
Turning radius	Wa(mm)	1535
Travel speed,laden/unladen	Km/h	9/10
Lift speed,laden/unladen	m/s	0.1/0.15
Lowering speed,laden/unladen	m/s	0.07/0.08
Gradeability (laden/unladen)	%	8/15
Traveling brake		Electromagnetic
Driving motor power	kW	1.5
Lifting motor power	kW	2.2
Battery voltage,nominal capacity K5	V/Ah	24/450
Battery dimensions	mm	654x305x705
Battery weight	kg	
Noise level at operator's ear, according to DIN12053	dB(A)	70



ELECTRIC LOW LEVEL ORDER PICKER OPL10S



Advantages:

- Max.lifting height of platform is 1.2M. The capacity of loading tray is 60kg.
- Extra fork lifting&lowering control button located at the backrest of platform.
- Straight driving control at the backrest, enables operator picking orders while off the truck.
- Advanced power steering system (EPS) handle ensures effortless and highly efficient maneuverability.
- Combining of regenerative brake and electromagnetic brake provide safe and reliable brake.
- Side-way battery designs is very convenient for maintenance and replacement.
- USB charge device on the control panel which could charge phone, pad, etc.
- High propelling power to reach 10KM/H speed at full load. 10% max. gradeability enhances working efficiency and reliability.
- Advanced AC control with reliable performance is easy to maintain. Speed frequency control makes good control performance.
- Small turning radius and stepless speed control ensure the trucks can be used in narrow workplace.
- With reasonable layout of the key components, it is convenient to maintain.

